

GREENBURGH ELEVEN SCHOOL DISTRICT
RAFAEL CORDERO SCHOOL

FIRE DRILL PROCEDURES
2012-2013

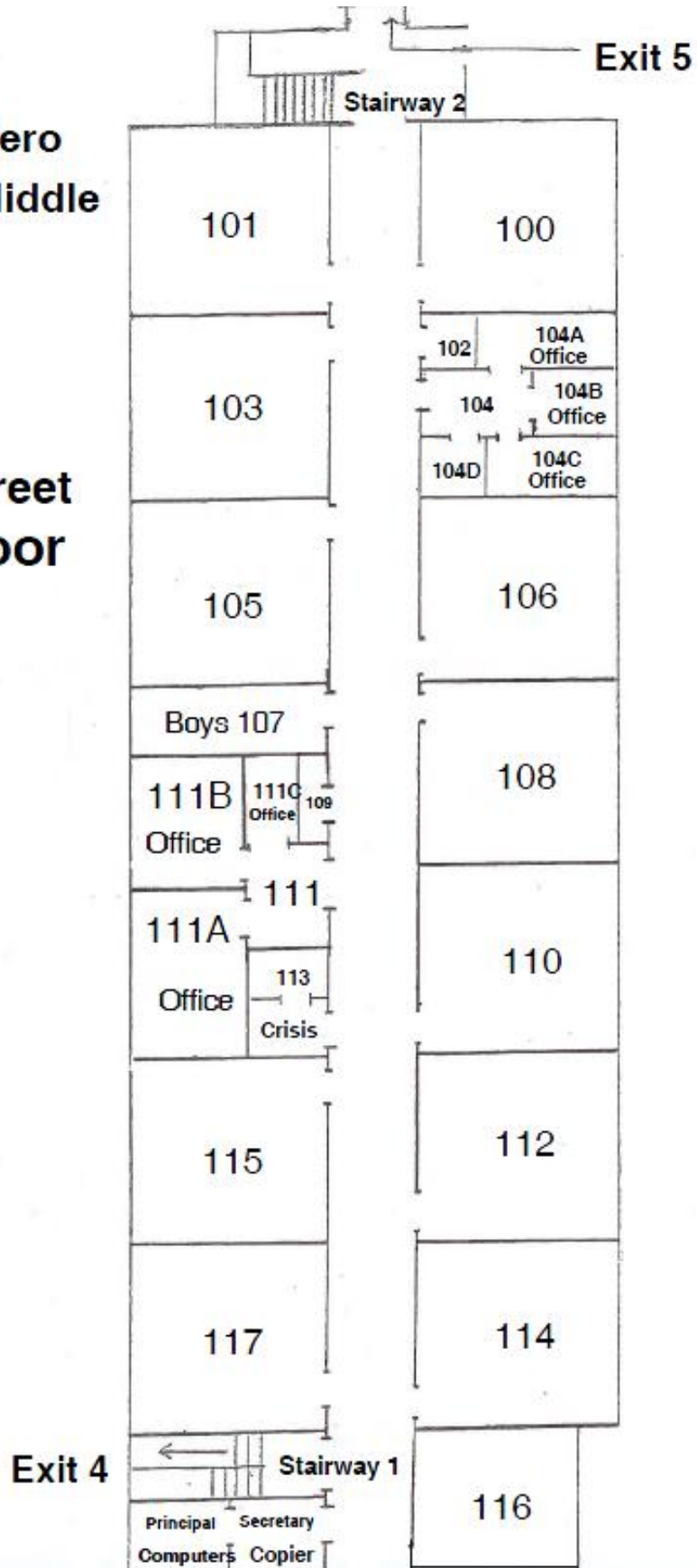
General Information:

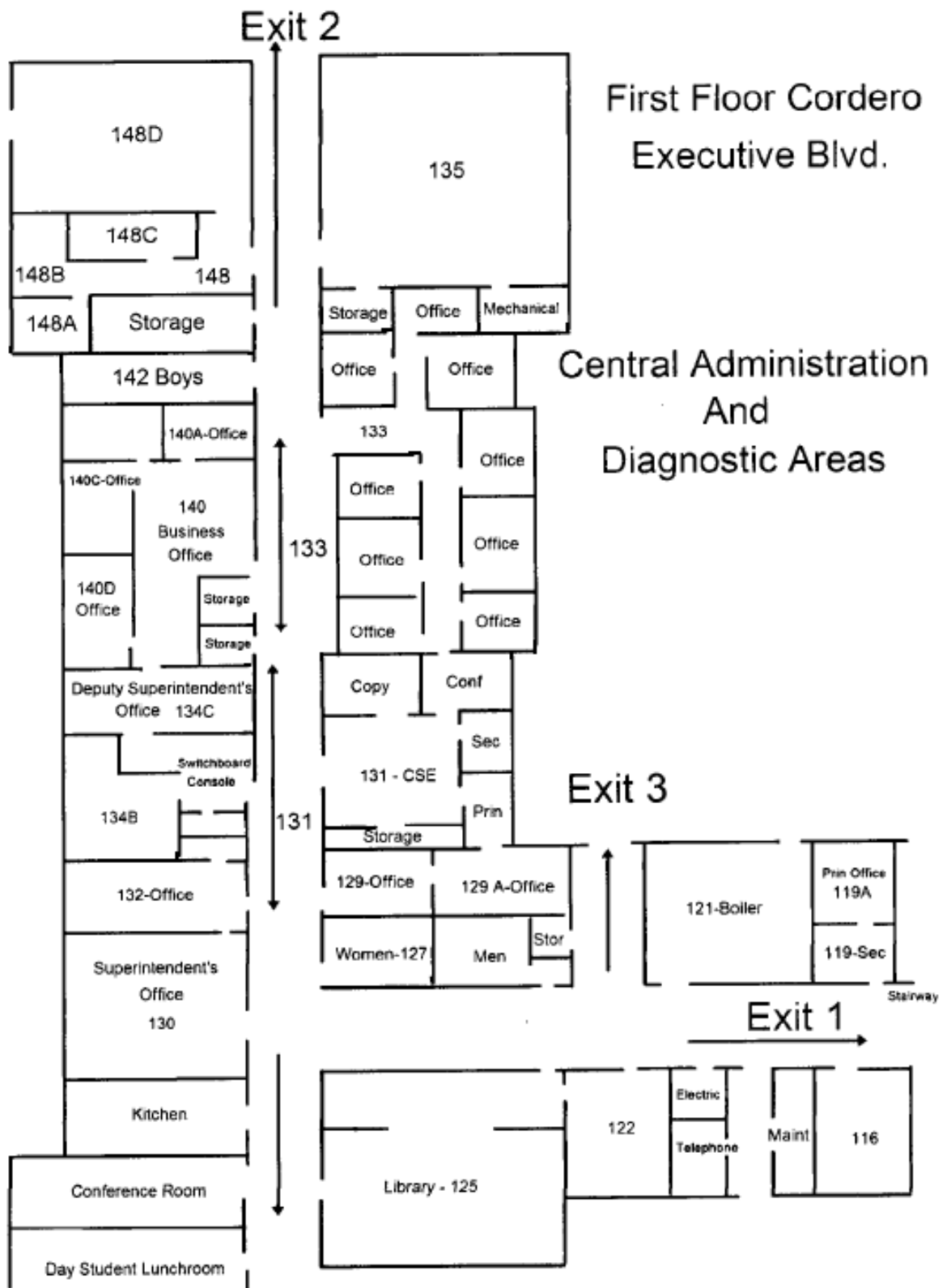
1. All staff members, students, and visitors must leave the building when the alarm sounds.
2. Teachers and teacher associates escort classes out of the building using the stairways indicated below. Teachers should lead classes and teacher associates should be at the rear of classes during fire drills. Make certain everyone leaves the classroom and stays together.
3. Be certain that classroom doors are closed and unlocked.
4. Crisis personnel must check Boys' Rooms, Ladies Rooms and Men's rooms to make certain everyone has left the building.
5. Move classes 300 feet away from the building, and do not block entrances or road access for emergency vehicles. Await instructions from School Administrators.
6. Silence, speed and order must be enforced from the time the first signal is given until the signal to return to the building is given. Students should not bring any objects with them nor be allowed to re-enter the building during the drill.

<u>ROOM</u>	<u>EXIT</u>	<u>ROOM</u>	<u>EXIT</u>	<u>ROOM</u>	<u>EXIT</u>
100	5	125 Library	1	200	5
101	5	127 Women's	1	201	5
103	5	128	1	202	5
104 A,B,C	5	129	1	203	5
105	5	129A	1	204	5
106	5	130	1	205	5
107	3	131	1	206	4
108	3	132	1	207	4
109	3	133	2	208	4
110	3	134	1	209	4
111	3	135	2	210	4
112	3	140	2	211	4
113	3	142	2	212	4
114	3	144	2	213	4
115	3	146	2	214	4
116	3	148 A,B,C,D	2	215	4
117	3			216	4
119	3			217	4
Boys' Room	5			218	4
Men's Room	3			219	4
				Boys'	5
				Men's	4
				Women's	4

**Rafael Cordero
Elementary/Middle
School**

**Dream Street
First Floor**





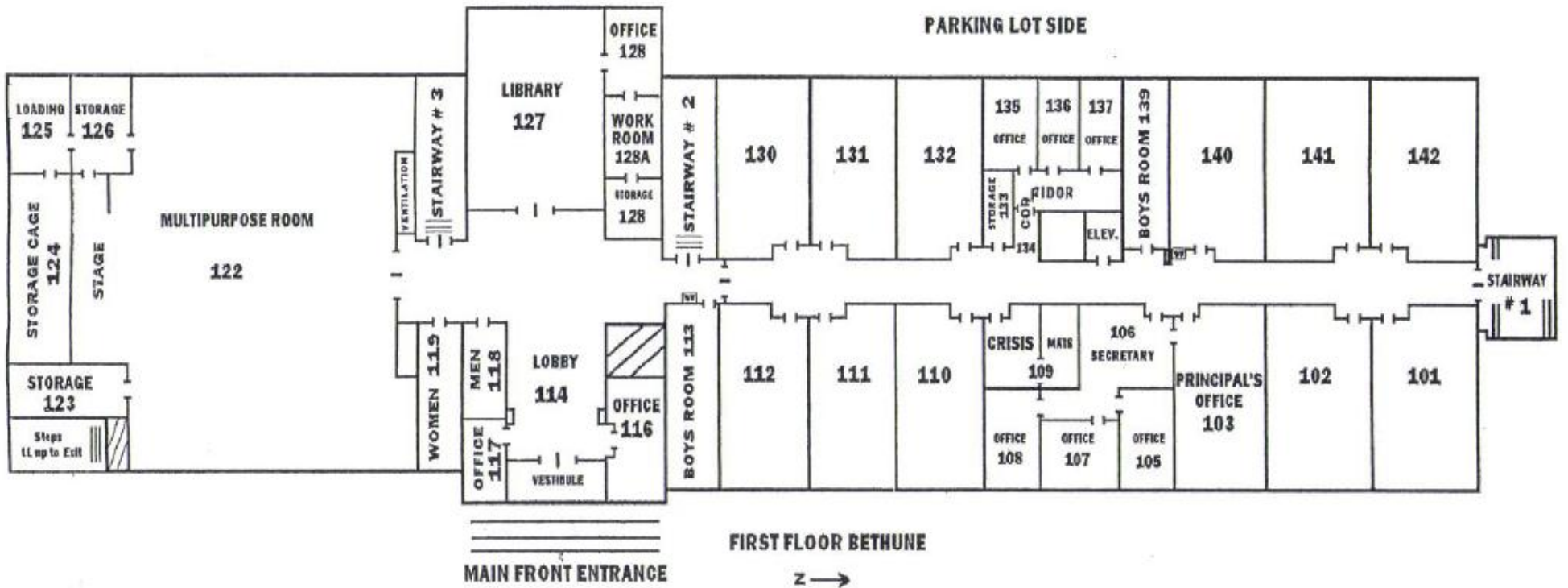
GREENBURGH ELEVEN SCHOOL DISTRICT
MARY MCLEOD BETHUNE SCHOOL

FIRE DRILL PROCEDURES
2012-2013

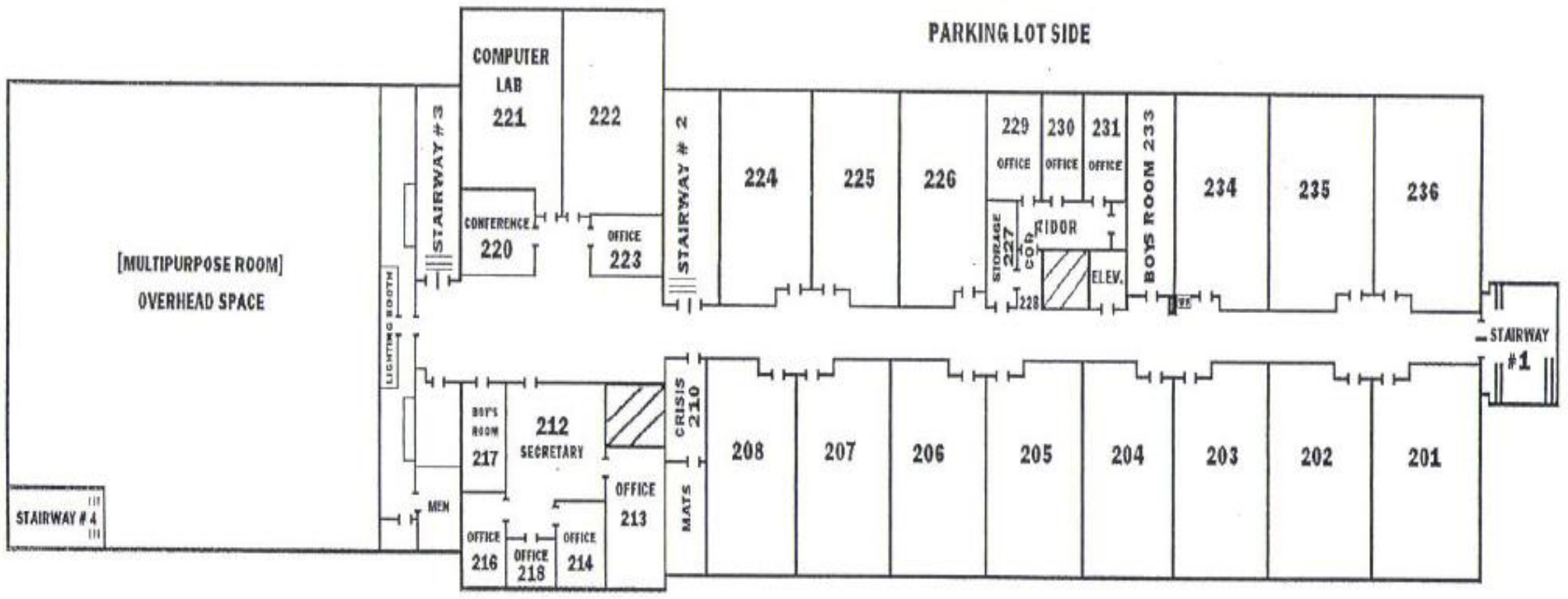
General Information:

1. All staff members, students, and visitors must leave the building when the alarm sounds.
2. Teachers and teacher associates escort classes out of the building using the stairways indicated below. Teachers should lead classes and teacher associates should be at the rear of classes during fire drills. Make certain everyone leaves the classroom and stays together.
3. Be certain that classroom doors are closed and unlocked.
4. Crisis personnel must check Boys' Rooms, Ladies Rooms and Men's rooms to make certain everyone has left the building.
5. Move classes 300 feet away from the building, and do not block entrances or road access for emergency vehicles. Await instructions from School Administrators.
6. Silence, speed and order must be enforced from the time the first signal is given until the signal to return to the building is given. Students should not bring any objects with them nor be allowed to re-enter the building during the drill.

<u>ROOM</u>	<u>STAIRWAY</u>	<u>ROOM</u>	<u>STAIRWAY</u>	<u>ROOM</u>	<u>STAIRWAY</u>
LL03 Lunchroom	1	117	Main Entr.	216	3
LL06	1	101	1	201	1
LL07A	1	102	1	202	1
LL07	1	103	1	203	1
LL08	1	104	Main Entr.	204	1
LL10	1	105	Main Entr.	205	2
LL11	1	106	Main Entr.	206	2
LL12	1	107	Main Entr.	207	2
LL13 Boys'	1	108	Main Entr.	208	2
LL16 Men's	2	109	Main Entr.	209	2
LL17 Women's	2	110	Main Entr.	210	2
LL18	1	111	Main Entr.	212	3
LL19	1	112	Main Entr.	213	3
LL20	2	114 Boys'	Main Entr.	214	3
LL21	2	116	Main Entr.	215	3
LL22	1	118 Men's	Main Entr.	217 Boys'	3
LL22A Women's	1	119	Main Entr.	218 Women's	3
LL25 Rm.	1	122 MPR	Room Exit	218A Men's	3
LL26 Rm.	1	124	4	220 Conf.	3
LL27 Library	1	127	Min Entr.	221	3
LL31	1	128A	Main Entr.	222	3
LL31A	1	129	Main Entr.	223	3
LL34	1	130	2	224	2
LL50	3	131	2	225	2
LL51	4	132	2	226	2
LL52 Conf.	4	133	2	229	1
LL54 Boys'	4	135	2	230	1
LL57	4	136	2	231	1
LL58 Music	4	137	2	232	1
LL59 Music	4	139	2	233 Boys'	1
LL60	4	140	1	234	1
LL62	4	141	1	235	1
LL63 Aud/Vis	4	142	1	236	1



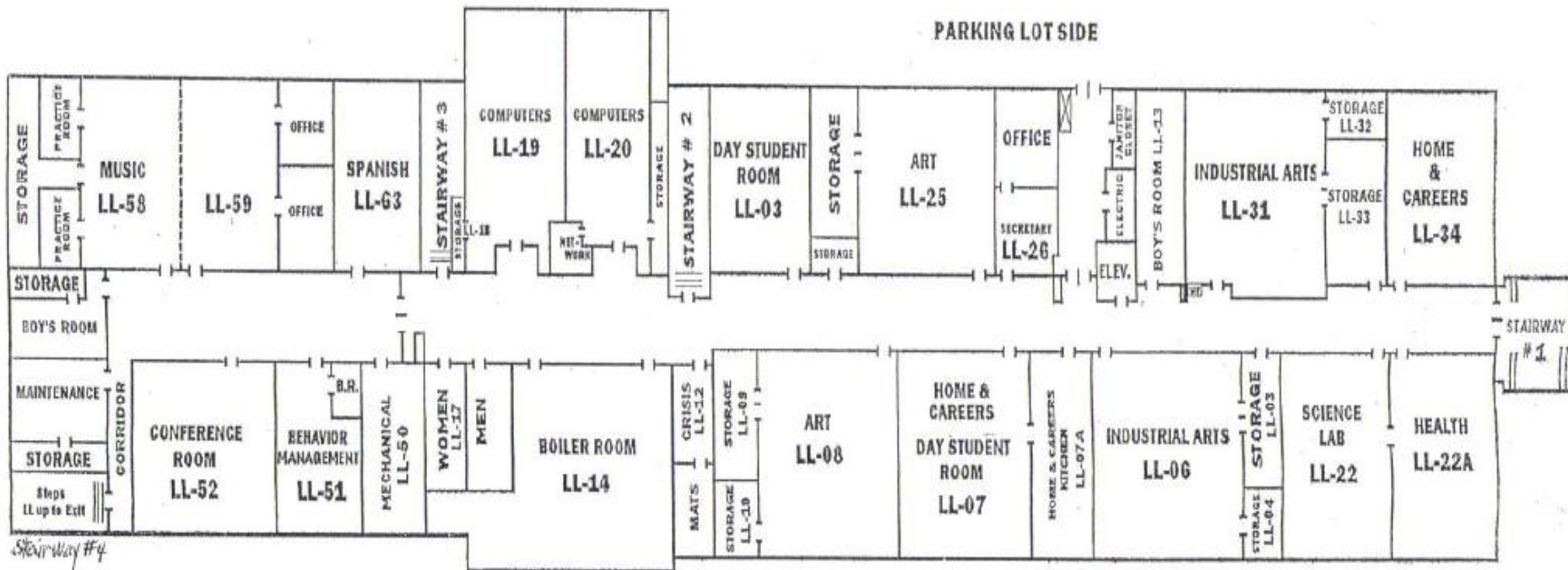
PARKING LOT SIDE



SECOND FLOOR BETHUNE

MAIN FRONT ENTRANCE





PARKING LOT SIDE

LOWER LEVEL BETHUNE [SPECIAL AREAS]

MAIN FRONT ENTRANCE

